

Phase I & II Surgery

Implant Supported Prosthesis

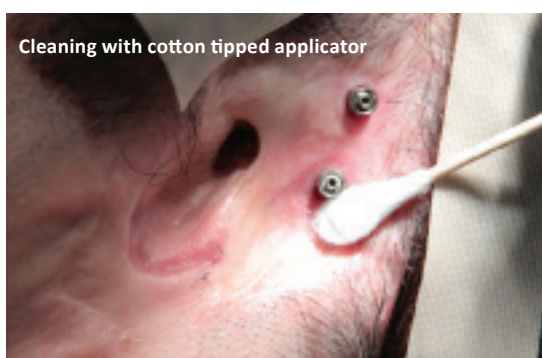


iRSM, 1W-02, 16940-87 Avenue, Edmonton, Alberta, Canada T5R 4H5 | ph: 780-735-2660 | email: irmsm@albertahealthservices.ca

PHASE I SURGERY

It is important for the healing process that the following directions be followed after the first surgery:

- A pressure dressing will be placed over the area of surgery. Do not disturb this dressing or attempt to remove it.
- Use an additional pillow to elevate the head while sleeping for the first 3–4 days.
- Do not wash or contaminate the area of surgery for 2–4 weeks.
- Do NOT wear any old prostheses. Only resume wearing a prosthesis with the surgeon's permission.
- Return for dressing and suture removal as instructed by the surgeon.



PHASE II SURGERY

Once the abutments have been connected through the skin at the second stage surgery, it is important for healing that you do the following:

- Do not attempt to remove or disturb the dressing. The surgeon will arrange to change the dressing.
- When sleeping, use an additional pillow to elevate the head.
- Once the dressing has been removed, use a cotton tipped applicator to lightly clean around the abutments daily. Do this very gently. The cotton tipped applicator may be moistened with a water or saline solution.
- Apply topical antibiotic ointment as directed by the surgeon.
- After 2–3 weeks, the hygiene procedures to be used will be reviewed with you.