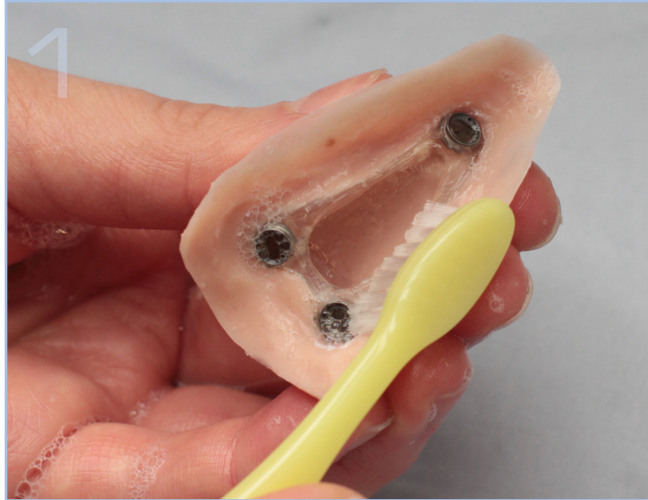


Homecare for your Implant Retained Nasal Prosthesis



iRSM, 1W-02, 16940-87 Avenue, Edmonton, Alberta, Canada T5R 4H5 | ph: 780-735-2660 | email: irms@albertahealthservices.ca

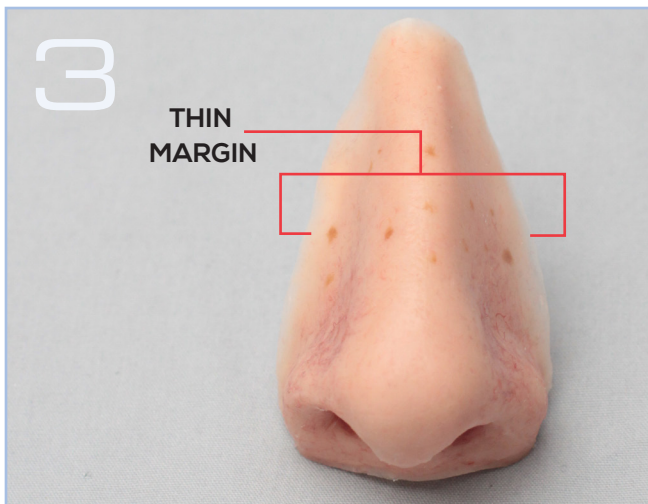
www.irmsyeg.ca



Once a day, use the provided children's toothbrush and a mild liquid soap to clean the back side of the prosthesis. Use a colorless hand soap with no strong fragrance, do not use antibacterial soap. Scrub the magnets or gold clips using the brush and soap lather.



Using your fingers and a small amount of soap lather, wash the front side of the prosthesis. Rinse the prosthesis under cool or lukewarm water and gently dry with a cloth. Never use hot water or any extreme heat (i.e. sunlight) on the prosthesis.



The margins of the prosthesis are very thin (see photo). Careful attention must be made not to tear or damage this edge.



Store the prosthesis in the provided clean, dry container. Place the prosthesis in the container with the front side down. Doing this will help to keep the edges from curling.